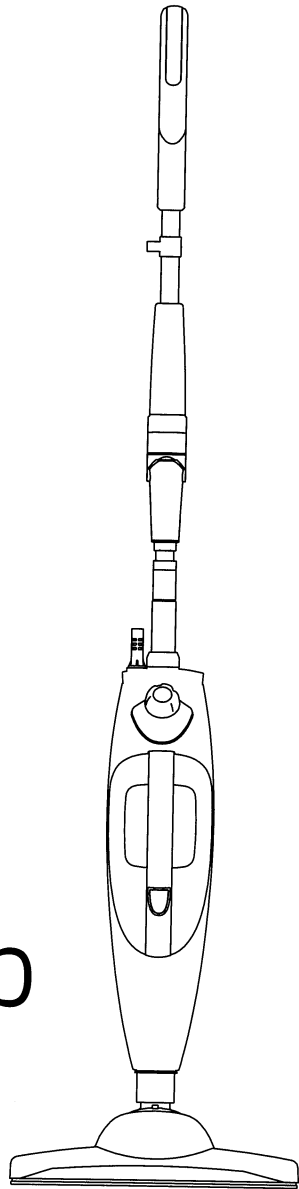


**Instruction Manual**

*Please read these instructions  
fully before using this product.*  
**SAVE THESE INSTRUCTIONS**



# Steam Mop

TM

Live better. We'll show you how.™

# Steam Mop

TM

Live better. We'll show you how.™

## Table of Contents

Safety Instructions & Warnings	Page 1
Parts and Features	Page 2
Assembly	Page 3, 4
Using your Steam Mop	Page 5, 6
Using your Carpet Glider	Page 7
Care, Cleaning, and Storage	Page 8
Troubleshooting	Page 9
Replacement Parts	Page 10
Technical Specifications	Page 10
After Sales Form	Page 11

## BASIC SAFETY PRECAUTIONS SHOULD ALWAYS BE FOLLOWED WHEN USING THE STEAM MOP. READ ALL INSTRUCTIONS BEFORE USAGE.

1. Use only as described in this manual.
2. Use only manufacturer's recommended accessories.
3. Do not use outdoors.
4. Do not leave the appliance unattended when plugged in. Always unplug the power cord from the electrical outlet when not in use and before servicing.
5. Do not allow the appliance to be used as a toy. Close attention is necessary when used by or near children, pets, or plants.
6. Do not operate the appliance with a damaged plug or cord, or if the unit has been dropped or damaged. Return it to the manufacturer or the relating maintenance department for examination and repair.
7. Do not pull or carry by the power cord, use power cord as handle, close a door on the power cord, or pull the power cord around sharp edges or corners. Keep power cord away from heated surfaces.
8. Do not unplug by pulling on power cord. To unplug, grasp the plug not the power cord.
9. To avoid the risk of electric shock:
  - a. Do not immerse the appliance into water or any other liquids.
  - b. Do not handle plug or the unit with wet hands or operate appliance without shoes.
  - c. Do not use the extension cords or outlets with inadequate current carrying capacity.
  - d. Do not disassemble or attempt to repair the appliance on your own. Incorrect reassembly or repair can cause a risk of electrical shock or injury to persons when the appliance is used.
10. Keep your work area well lit.
11. Use only on flat, horizontal surfaces. Do not use on walls, counters, or windows.
12. Do not use on leather, wax polished furniture or floors, synthetic fabrics, velvet or other delicate, steam sensitive materials.
13. Extreme caution should be exercised when using this appliance to clean stairs.
14. When in use, never turn the appliance over or on its side. Never direct steam towards people, animals, or plants.
15. Do not put any objects into openings. Do not use with any opening blocked.
16. Do not put hands or feet under the steam mop. Unit gets very hot.
17. Never use the steam mop without a microfibre pad attached.
18. Do not add cleaning solutions, scented perfumes, oils or any other chemicals to the water used in this appliance as this may damage the unit or make it unsafe for use. If you live in a hard water area, we recommend using distilled water in your steam mop.
19. Carefully remove the microfibre pad immediately after you have unplugged and allowed the unit to cool.
20. When cleaning the steam mop, unplug the power cord from the electrical outlet and clean with a dry or damp cloth. Do not pour water or use alcohol, benzene, or paint thinner on the unit.
21. Store appliance indoors in a cool, dry area.
22. Do not store unit with damp/wet microfibre cleaning pad attached. Never leave the steam mop in one spot or any surface for any period of time with a damp or wet microfibre cleaning pad attached as this will damage your floors.

### WARNING

Your steam mop is designed to clean hard floor surfaces that will withstand high heat. Do not use on unsealed wood or unglazed ceramic floors. On surfaces that have been treated with wax or some no wax floors, the sheen may be removed by the heat and steam action. It is always recommended to test an isolated area of the surface to be cleaned before proceeding. We also recommend that you check the use and care instructions from the floor manufacturer. HOUSEHOLD USE ONLY.

### DANGER OF SCALDING

The steam emitted is very hot and there is a danger of scalding. Please use caution when using the steam mop.

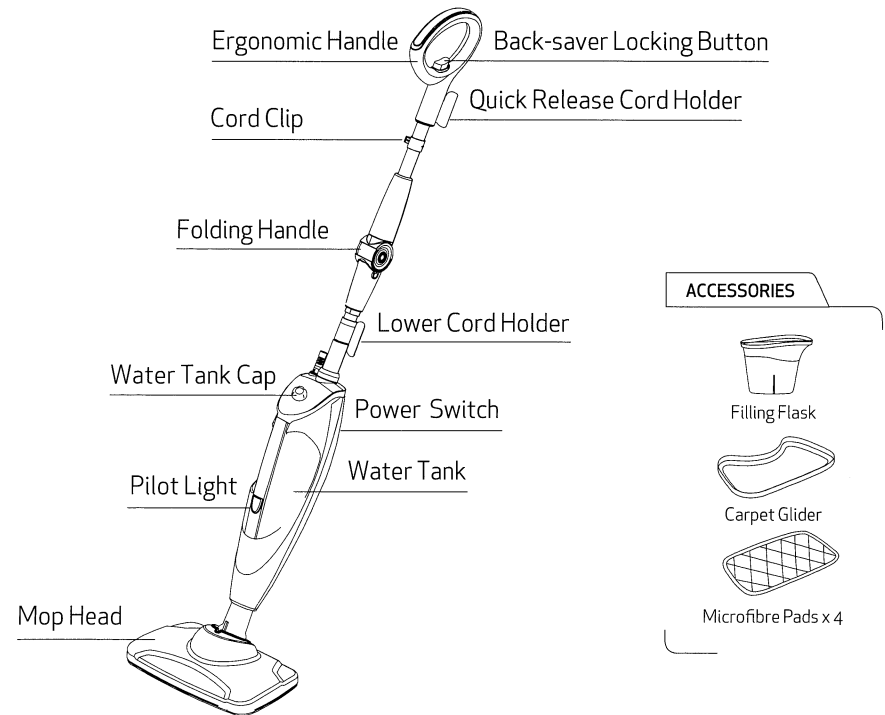
## Parts and Features

The steam mop is designed to clean surfaces that will withstand high heat and moisture.

Do not use on unsealed wood surfaces (especially wooden antique furniture), unglazed ceramic tile, painted surfaces, surfaces that have been treated with wax, oils, varnishes, or shellac. The sheen may be removed by the heat, steam, and friction of the cleaning tools. Lacquer and polyurethane coating provide a hard durable protective finish that withstands moisture, but it is always recommended to test an isolated area of the surface before proceeding.

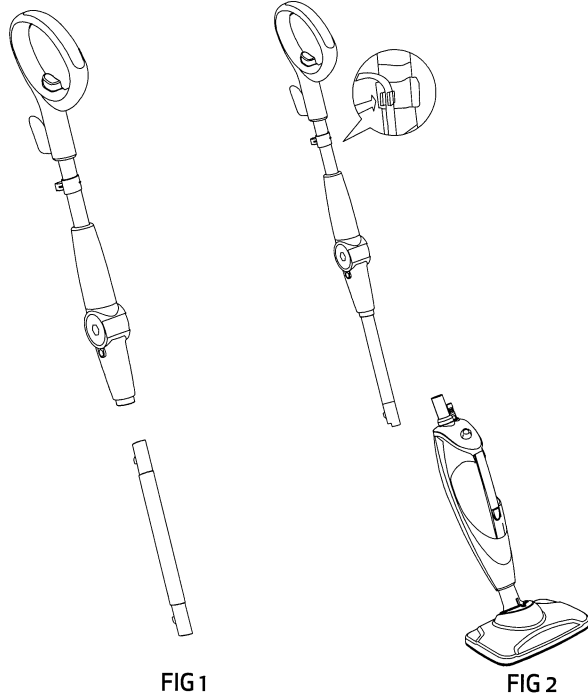
We also recommend you check the use and care instructions from the floor manufacturer. When cleaning finished wood surfaces, use broad and continuous cleaning strokes.

To prevent surface damage, avoid focusing steam or allowing the steam mop to sit in one spot for any amount of time.



## Assembly

When assembling your steam mop, there may be a little water in the water tank. This is because we test all our steam mops 100% before you buy them, so you get a quality steam mop.

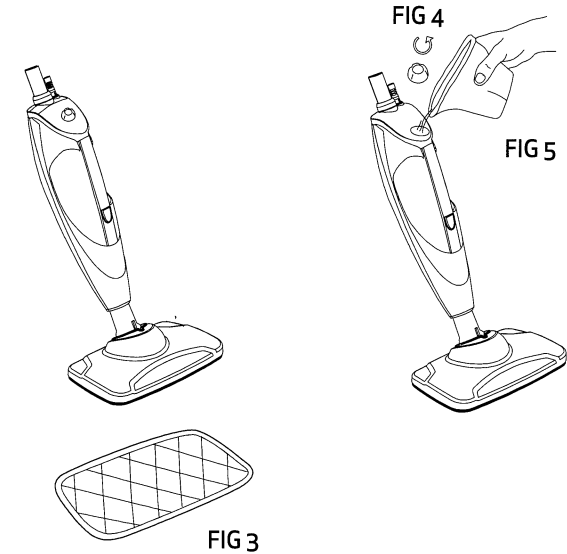


1. Remove all the parts from the package. Verify all the parts are included.
2. Insert the lower tube into the folding handle as shown (Fig. 1).
3. Insert the assembled tube into the base of the steam mop. Gently push down on the tube until you hear it click into place (Fig. 2).

### IMPORTANT:

Always make sure the steam mop is unplugged from the electrical outlet when not in use, or before filling the water tank.

**TIP: Your microfibre cleaning pads should be replaced every 3 months to maximize cleaning performance.**



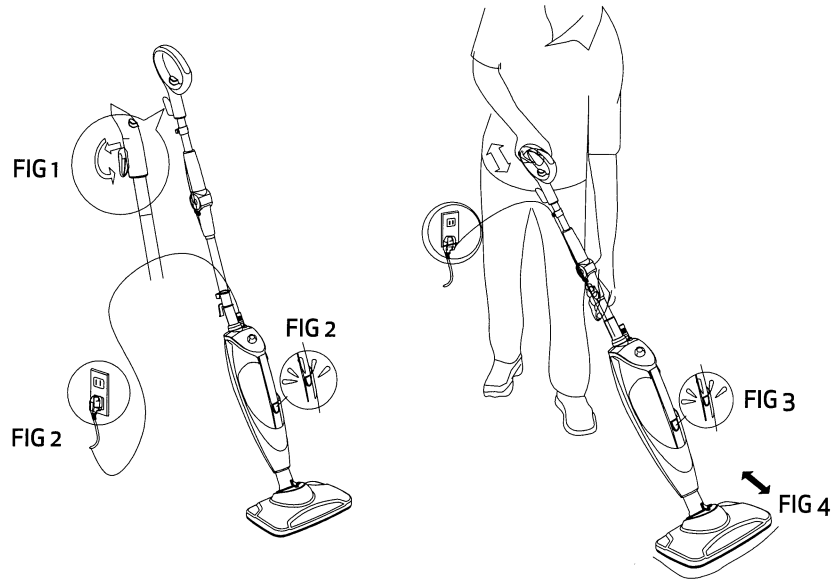
4. Place the microfibre cleaning pad on the floor with quick fastener strips facing up. Simply press the steam mop onto the pad to attach (Fig. 3).
5. Remove the water tank cap by turning it counter-clockwise to the unlocked position (Fig. 4).
6. A filling flask is included with your steam mop to making filling the water tank easy. Fill the flask with water and use the funnel to pour water into the tank. Keep the water level under the MAX line (Fig. 5).
7. Replace the water tank cap by turning it clockwise to the locked position.

### IMPORTANT:

Only add water to the tank. Chemicals or cleaning solutions may be unsafe or cause damage. To extend the life of your steam mop, we recommend using distilled water. If you live in an area with hard tap water, we strongly recommend using distilled water.

## Operation - Using your Steam Mop

When you use your steam mop for the first time or if you have not used the unit in a while, it may take a minute or two for the water to travel through the pump into the heater to create steam. If you have waited a few minutes and you still do not see any steam, reference the troubleshooting section.

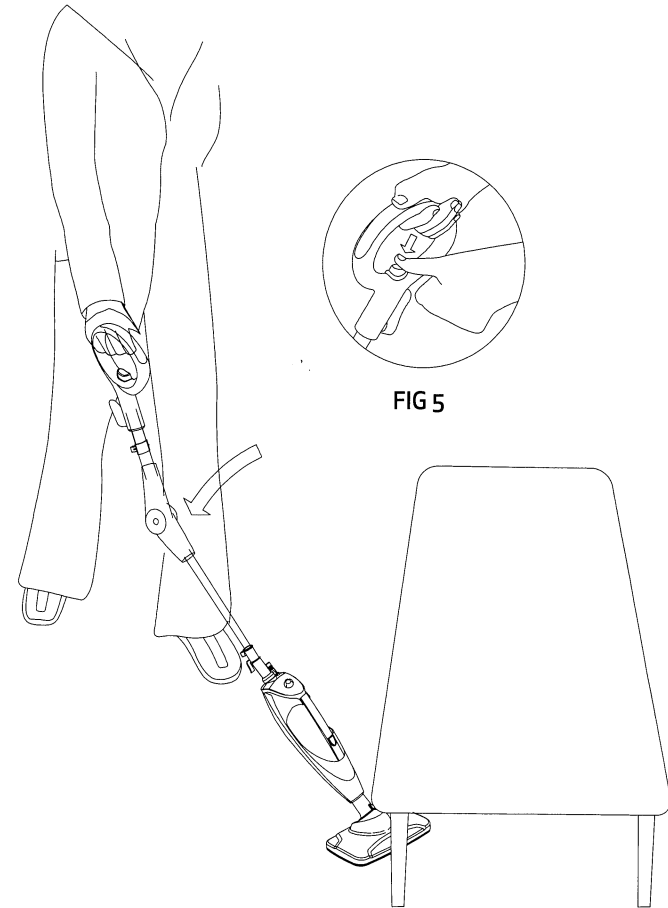


### IMPORTANT:

Your steam mop needs water to make steam! Never use your steam mop without water in the tank or a pad attached. Sweep or vacuum your floors before using your steam mop. It may take a few seconds for the mop to warm up and start steaming after you plug it in. If you press the steam button and the unit does not begin to steam immediately, just wait a few seconds for the mop to heat up to a deep cleaning and sanitizing temperature.

1. Twist the quick release cord holder to unwrap the power cord completely (Fig.1).
2. Plug into a standard electrical outlet (Fig. 2). The LED light will blink blue to show that you are in standby mode. If the light does not turn on, reference the trouble shooting section.
3. Press the steam button, the LED light will turn solid blue, and the electronic pump will automatically generate steam (Fig. 3).
4. Clean your floors with a forward and backward motion (Fig. 4).
5. Press the steam button at any time to stop the steam.

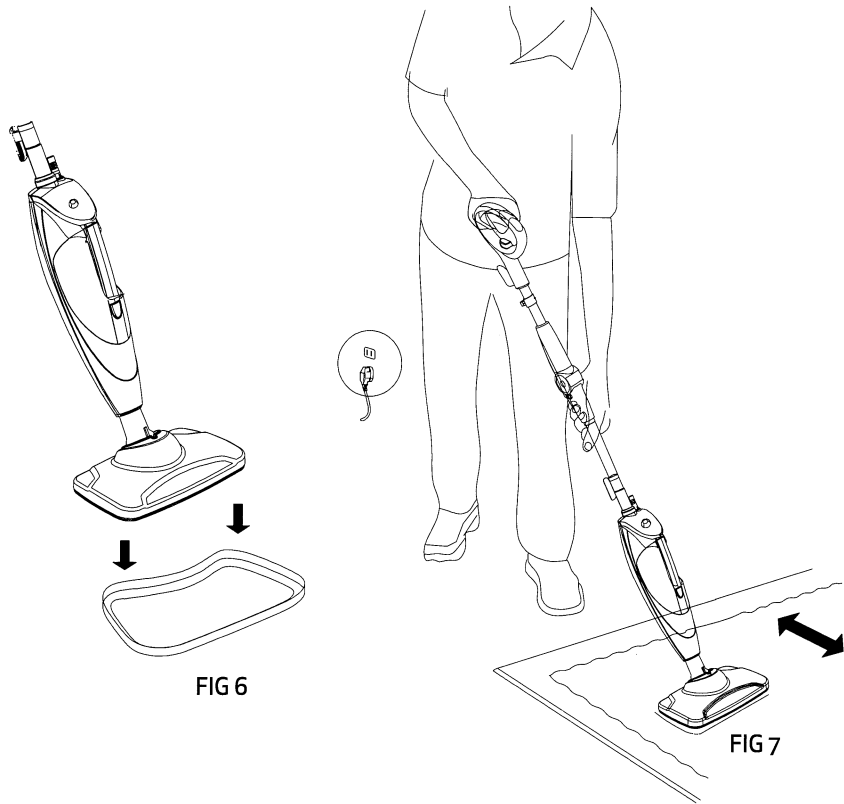
**TIP:** Clean under furniture and tight areas, using the Folding Handle feature!



6. Clean under furniture and tight areas using the folding handle benefit. Press the handle release button and apply slight pressure to bend the handle. The folding joint will lock at a perfect, maximizing angle (Fig. 5).
7. Press the release button again and pull up to straighten.

## Carpet Glider

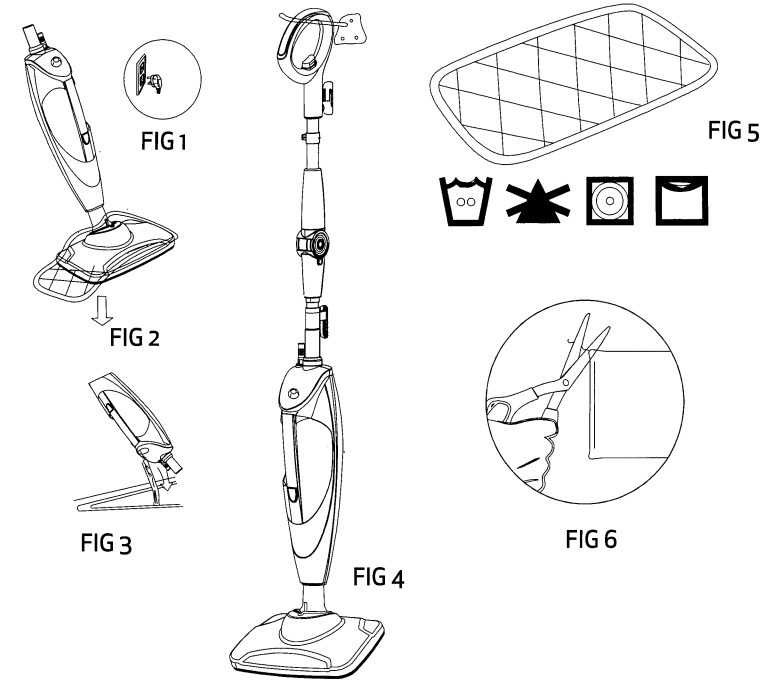
The steam mop is versatile! The carpet glider transforms your steam mop in no time. Now you can freshen and deodorize your carpets and area rugs with the power of steam.



8. Set the carpet glider on the carpet with the smooth side down. Place the mop head, with a pad attached, on top of the carpet glider. The steam mop will rest on top of the glider (Fig. 6).
9. Plug in the steam mop and begin freshening your carpet by pushing the mop and glider back and forth to release steam (Fig. 7).
10. When finished, unplug and store as advised.

Note: The steam mop will not pick up solid particle or hair from carpets or areas rugs, but it is great for deodorizing and freshening carpet surface against tough odours.

## Care and Cleaning



1. When you have finished using the steam mop, press the steam button to stop the unit from steaming. The LED light will blink blue. Unplug the cord from the outlet (Fig. 1) and place the mop into the upright position and let the unit cool 3-5 minutes.
2. Carefully separate the microfiber cleaning pad from steam mop, avoiding contact with the hot pad or dirt (Fig. 2).
3. Empty the water tank before storage. Remove the water tank cap and empty the tank over a sink. Replace the water tank cap (Fig. 3).
4. To store the cooled steam mop, hang on a large hook (Fig. 4). Or store the steam mop standing upright, leaning against a wall. Make sure it's stored away from children and high traffic areas.
5. Wash pads in warm water. Wash separately from other laundry. Only use liquid detergent (no powder detergent). Do not use fabric softeners. Line dry or dry on a low dryer setting (Fig. 5).
6. If there are loose threads on the pad, carefully cut the threads with scissors. Do not pull on them or cut at the base (Fig. 6).

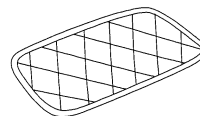
### IMPORTANT:

The cleaning pad may be very hot from the steam after use. Use caution when removing. Let the unit cool for 3-5 minutes first before removing.

## Troubleshooting

PROBLEM	POSSIBLE REASONS AND SOLUTIONS
The steam mop will not turn on.	<ol style="list-style-type: none"> <li>1. The steam mop should be securely plugged into an electrical outlet only.</li> <li>2. Is the LED light on? If not, check your fuse or breaker.</li> </ol>
Steam mop will not make steam	<ol style="list-style-type: none"> <li>1. Is there water in the water tank? If not, add water to your steam mop following instructions.</li> <li>2. Is the LED light is blinking blue? If so, press the steam button to activate the steam.</li> </ol>
Cannot select steam setting/flashing blue light remains on.	<ol style="list-style-type: none"> <li>1. If you have already plugged in your unit, unplug, and try a different outlet. This may reset the mop.</li> <li>2. Add water to tank and press the steam control button to select a steam setting.</li> </ol>
Steam mop left white spot on the floor.	<ol style="list-style-type: none"> <li>1. Do not leave your steam mop on the floor with a damp or wet cleaning pad.</li> <li>2. Do you have hard water? If you do, it is strongly recommended to use distilled water.</li> </ol>
Steam mop leaves water on the floor.	<ol style="list-style-type: none"> <li>1. Your cleaning pad might be too wet. Unplug your steam mop and change the microfiber cleaning pad.</li> <li>2. Wait 30 seconds to heat water to create steam. If water does not heat, water will be emitted instead of steam.</li> </ol>
Floors are cloudy, streaky, or spotty after steaming	<ol style="list-style-type: none"> <li>1. The pad might be dirty, change the pad.</li> <li>2. If you washed the pad with powder detergent, then the pad may have residual detergent left on it. Wash it again with liquid detergent</li> <li>3. If you are cleaning in a kitchen area where there might be a buildup of grease, use a degreasing agents such as an all-purpose cleaner or dish soap and paper towels to clean the area first.</li> <li>4. You might have left the mop in the same spot too long.</li> <li>5. Do you have hard water? If you do, you might want to switch to distilled water.</li> <li>6. This might be left over from past cleaners used on the floor surface. Use the steam mop a few more times and see if the left-over cloudiness is removed.</li> </ol>
Steam mop is hard to push.	<ol style="list-style-type: none"> <li>1. Make sure the cleaning pad is attached correctly.</li> <li>2. Check to see if the cleaning pad is excessively dirty. Replace if the pad is too dirty or wet.</li> </ol>

## Replacement Parts



To order additional microfiber pads, please visit [www.oceansales.ca](http://www.oceansales.ca) or [www.oceansales.us](http://www.oceansales.us).

For other parts or accessories, please contact [info@oceansales.ca](mailto:info@oceansales.ca) or [info@oceansales.us](mailto:info@oceansales.us).

### PARTS

1. Microfibre Pads
2. Filling Flask
3. Carpet Glider

### Technical Parameters

Model: 2908-1  
 Voltage: 120 V  
 Frequency: 60 Hz  
 Power: 1550 W  
 Water Tank: 380 ml/12.85 oz



## After Sales Returns Form – Guarantee Slip

### If your steam mop requires attention:

1. First, check the operating instructions supplied to make sure the failure is not due to a problem you can rectify yourself.
2. If the steam mop is still under warranty contact the retailer, their details will appear on your receipt.

In order to enjoy the benefits of the one-year guarantee, please retain your proof of purchase, ensuring that it shows the date of purchase. Proof of purchase will be required within the guarantee period.

Model Number \_\_\_\_\_

Name \_\_\_\_\_

Address \_\_\_\_\_

Postal Code \_\_\_\_\_

Date of Purchase \_\_\_\_\_

**Please note:** Due to our continued development we reserve the right to alter the product.

### IMPORTED BY:

Ocean Sales Group Ltd.  
176 Country Hills Landing NW  
Calgary, AB T3K 5P3  
info@oceansales.ca | info@oceansales.us  
Toll-free 1-800-668-1966  
www.oceansales.ca | www.oceansales.us

MADE IN CHINA

**SAVE THESE INSTRUCTIONS**